



## **Agreement on Restrictions on Iona's Use of the Beechmont Oval for a Softball Field with a Drained Synthetic Surface, May 2007**

In May 2007, Iona's legal representative, Mr. Anthony Dougherty, sent the following agreed to restrictions on the use of a softball field Iona was planning to build on the Beechmont Oval.

1. Usage Limited to the Following Only:
2. (Iona will communicate these limitations to the college community);
3. NCAA women's softball games.
4. Iona College intramural sports. Excluding hardball.
5. Practice sessions for Iona athletes, excluding hardball.
6. Non-athletic events, approved and permitted by the College, up to ten times per year.
7. Iona College summer camp, and other uses including organized athletic activities not associated with Iona College are prohibited.

### **2. Hours**

Weekdays 8 am to dusk.

Weekends and holidays: 10 am to 6 pm or dusk, whichever is earlier; and except that women's softball games may conclude after 6 pm.

### **3. Access**

Planned access to the Oval for organized activities will be via the interior of the campus only. Iona shall direct all buses and cars containing visiting teams and spectators to park and empty inside the campus only.

### **4. Physical Features**

No lights.

No bleachers or stands.

No scoreboard except during NCAA women's softball games.

No permanent outfield fencing.

No permanent fencing at the Pryer terrace perimeter of the Oval.

No public address system. Except during: (1) NCAA women's softball games; and (2) events approved and permitted by Iona College, up to 10 times per year; and no logos.

## 5. Landscaping

Any artificial turf shall simulate the appearance of natural grass. In addition Iona shall produce and implement in conjunction with its site plan approval and landscaping and beautification plan intended to screen objectionable features and establish an appealing transition from the Oval to the surrounding neighborhood. It is anticipated that Iona will solicit input from neighborhood representatives in developing such a plan.

## 6. Upper Oval

Iona shall apply to rezone the upper Oval to Recreation and Open Space (ROS) and be subjected to amended ROS zoning requirements that establish enhanced review and scrutiny of the introduction or expansion of active recreational uses.

### Agreement for Request from Neighbors:

Screen the parking garage with a cluster of large-scale evergreen trees.

Use green or black colored chain-link fence on the softball field and home/plate backstop area.

Install removable foul poles and use pole only during softball season.

Leave all trees on the perimeter of the oval and perform only minimal trimming and pruning. Share the cost of planting two additional trees at the perimeter of the Oval at Pryer Terrace (across from the new homes) with The Beechmont Association. The estimate for this is @50-300 per share.

Create a natural transition from the upper Oval to the lower Oval by maintain the current grass on both surfaces.

## Iona Arts Events

### Gustavo Cortiñas & Desafío

**Candente**, November 2, 7:00 pm, Murphy Auditorium. Federico Garcia Lorca's renowned tragedy that unfolds in a cloistered world of women in 1930s Spain. Performed in Spanish with English translation

### Dance Ensemble – Colors of

**Patterns** The annual fall dance concert features students, faculty, and invited artists on inquiry on patterns that are present both within movement and those we see and witness in our lives and its application in movement and choreographic journey.

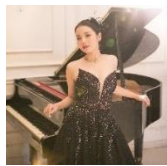
Director: Dr. Hannah Park. Date: November 4th at noon, November 5th at 7 p.m. Location: Murphy Auditorium; Admission: \$5.00 for Iona Community, \$10.00 for Public

### The Iona Players Fall Musical,

The Iona Players Fall Musical, Show: The Addams Family. Date(s): Friday, October 29 & 30. Time: 3 productions. Murphy Auditorium.

### Symphony of Westchester,

November 13<sup>th</sup>, 8 PM, Murphy Auditorium. W. A. Mozart: Overture: La Finta Giardiniera, K. 196, Joseph Haydn- Symphony no. 45 in F Sharp minor (The Farewell );



W. A. Mozart: Piano Concerto, no. 19, K. 459, in F Major, Crystal Jiang, pianist. Admission: Regular \$55. Seniors (over 65): \$40. Non-Iona Student: \$15. Iona Faculty/Students and Staff: Free

### New Rochelle Opera – “I’m Still Here”

November 14, 3 PM, Murphy Auditorium  
Tickets: \$28 general admission, \$25 seniors and \$15 non-Iona students; Iona Faculty/Students



and Staff are free. Reservations may be made by visiting [www.nropera.org](http://www.nropera.org), or by calling 1-800-838-3006.

**Reservations must be received by November 4, 2021.** For further information, phone 914-576-0365 or 914-576-1617.

### Iona College Theatre Ensemble

presents **The Weir**. In a bar in rural Ireland, the local men swap folklore stories to impress a young woman from Dublin who recently moved into a nearby house. However, the tables are soon turned when she spins a tale of her own. Tickets \$ 5.00 for students, alumni, and the Iona College community; \$10.00 for general admission. November 18, 7 PM; November 19, 2 PM and 7 PM; November 20, 1 PM; November 21, 1PM, Doorley Auditorium.

### Iona College Vocal Ensemble,

December 3, 3 PM, Christopher Murphy Auditorium, **American Voices are Singing**, The Iona College Vocal Ensemble a celebration of the nation's great vocal music. The Iona College Instrumental Ensemble will continue the performance with their program "**The Stories We Tell**," taking an auditory trip through the musical narratives that connect us all and move the human spirit. Tickets: \$5.00 for Iona College Community; \$10.00 for general admission.

### Symphony of Westchester an All Baroque Program

December 12, 3 PM in Murphy Auditorium. George Frederic Handel – Overture: Entrance of the Queen of Sheba. Water Music Suite, no. 1 in F Major. J.S. Bach – Suite no. 1, BWV 1066 in C major. Violin Concerto,



BWV 1041 no. 1 in A minor, Catherine Yang, violinist. Admission: Regular \$55, Senior (over 65): \$40 Non-Iona Student: \$15.

Iona Faculty/Students and Staff: Free

***For your protection and the safety of others, patrons are required to wear masks to gain attendance to all indoor events.***

